

# MALDIVES LAND AND SURVEY AUTHORITY

MINISTRY OF NATIONAL PLANNING AND INFRASTRUCTURE

Office (PABX): +(960) 3004300, Fax: +(960) 3004254

Ameenee Magu, Maafannu, Male', 20392, Maldives.

Email: [survey@planning.gov.mv](mailto:survey@planning.gov.mv)

Web: [www.surveyofmaldives.gov.mv](http://www.surveyofmaldives.gov.mv)



<b>CONTROL POINT DETAILS</b>	<b>Station Number</b> PSM 5756
<b>Coordinate Information</b>	
<b>Geodetic</b>	<b>Grid</b>
<b>WGS 84</b>	<b>UTM Zone 43</b>
Lat: E73° 26' 29.15"	E: 326561.1739
Long: N0° 41' 06.77"	N: 75764.8935
Ellp Height: -86.295	Orth Height: + 0.959
<b>Island Name:</b> Ga.Dihurah	<b>Date:</b> 16/10/2019

### Monument description & method of survey:

- Concrete casted in 300mm diameter PVC pipe, length measuring 1100mm buried below ground, 1m s/s rod driven into the concrete as the center mark. Monument labeled with s/s plate stating point ID.
- 40mm above ground
- GNSS static survey post processing.
- Vertical height corrected using tide prediction data

### General site condition & access:

- Located towards south east of the island.
- Easy access.

Owner: Bonavista (Maldives) Private Limited



DOWN TOWARD PSM



Height 1.5m  
Distance 5m

NORTH VIEW



Height 1.5m  
Distance 5m

EAST VIEW



Height 1.5m

FROM PSM UPTOWARD SKY



Height 1.5m  
Distance 5m

SOUTH VIEW



Height 1.5m  
Distance 5m

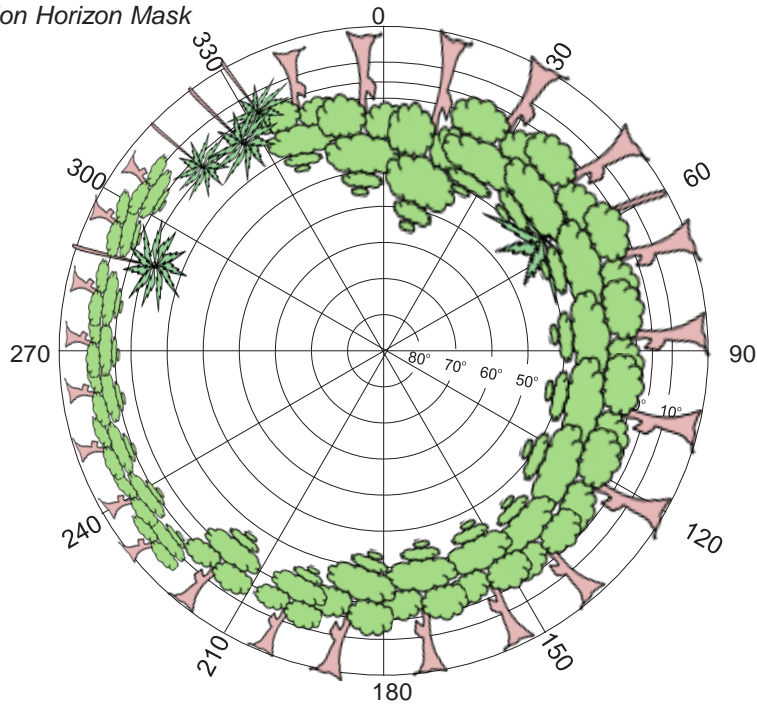
WEST VIEW

**SITE INFORMATION**

Station Number

P	S	M	5	7	5	6
---	---	---	---	---	---	---

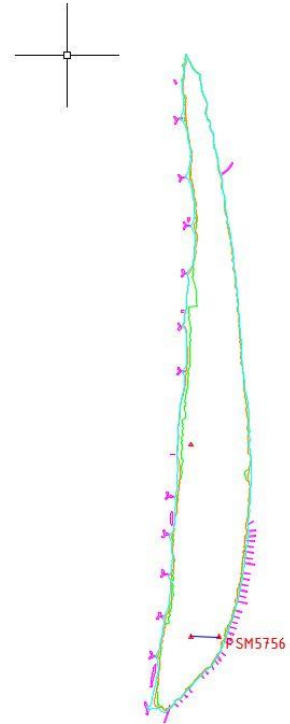
Station Horizon Mask



Height above Marker that horizon was mapped from 1.5 m

Magnetic Declination -----  
 Declination applied to this figure?  
 Yes  No

Locality



Sea Shore-screw Pine



19 m  
S160°

Ball Nut Tree (Funa)



9 m  
S189°

Water Villa 820 Pillar (Villa no. pillar)

12 m  
NW 307°



PSM 5756



Sketched by: Abdul Awwal A. Nizar

Scale: Not to scale

Date: 19/10/2019



# MALDIVES LAND AND SURVEY AUTHORITY

MINISTRY OF NATIONAL PLANNING AND INFRASTRUCTURE

Office (PABX): +(960) 3004300, Fax: +(960) 3004254

Ameenee Magu, Maafannu, Male', 20392, Maldives.

Email: [survey@planning.gov.mv](mailto:survey@planning.gov.mv)

Web: [www.surveyofmaldives.gov.mv](http://www.surveyofmaldives.gov.mv)



<b>CONTROL POINT DETAILS</b>	<b>Station Number</b> PSM 5757
<b>Coordinate Information</b>	
<b>Geodetic</b>	<b>Grid</b>
<b>WGS 84</b>	<b>UTM Zone 43</b>
Lat: E73° 26' 26.94"	E: 326492.5511
Long: N0° 41' 06.81"	N: 75766.4766
Ellp Height: -86.206	Orth Height: + 1.051
<b>Island Name:</b> Ga.Dihurah	<b>Date:</b> 16/10/2019

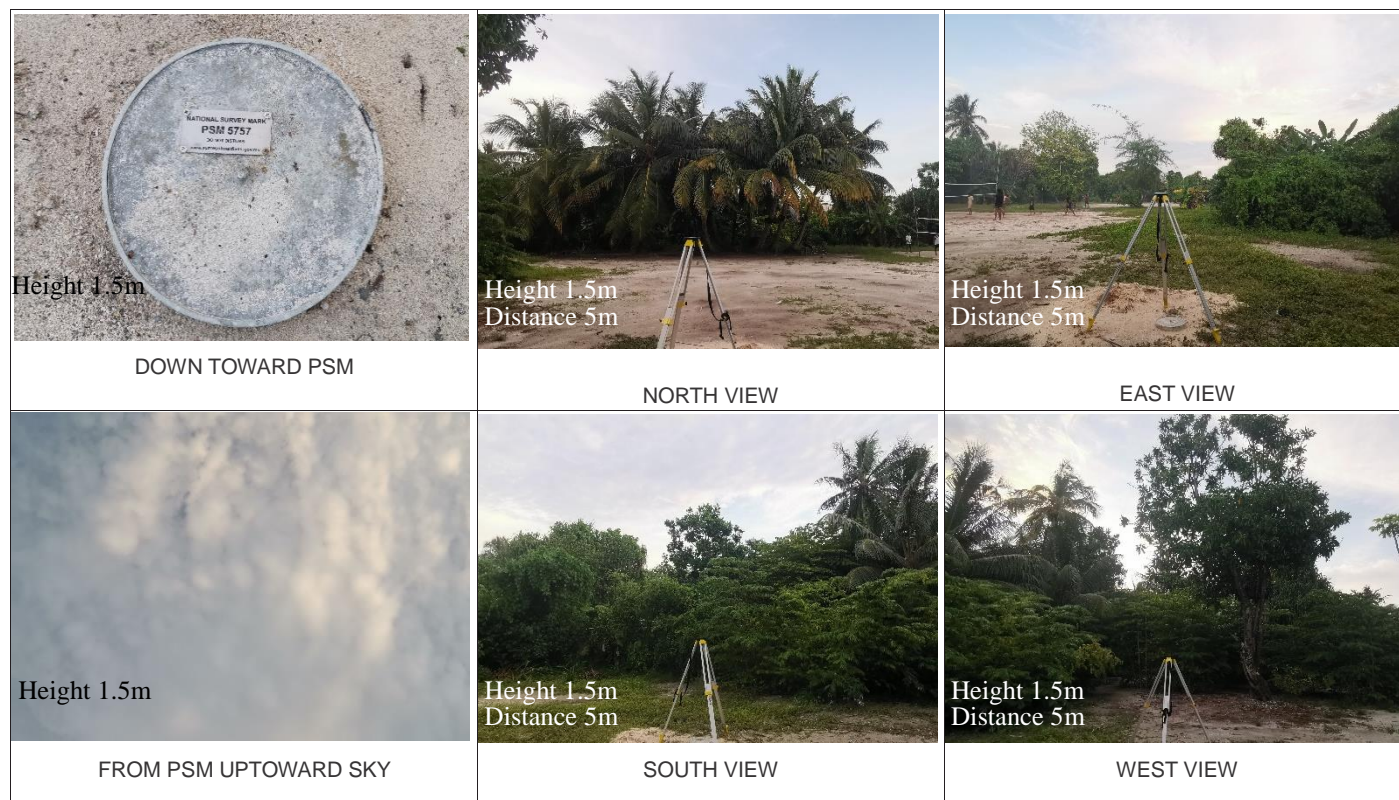
### Monument description & method of survey:

- Concrete casted in 300mm diameter PVC pipe, length measuring 1100mm buried below ground, 1m s/s rod driven into the concrete as the center mark. Monument labeled with s/s plate stating point ID.
- 40mm above ground
- GNSS static survey post processing.
- Vertical height relative to PSM 5756

### General site condition & access:

- Located towards south west of the island (west side of the football ground)
- Easy access.

Owner: Bonavista (Maldives) Private Limited

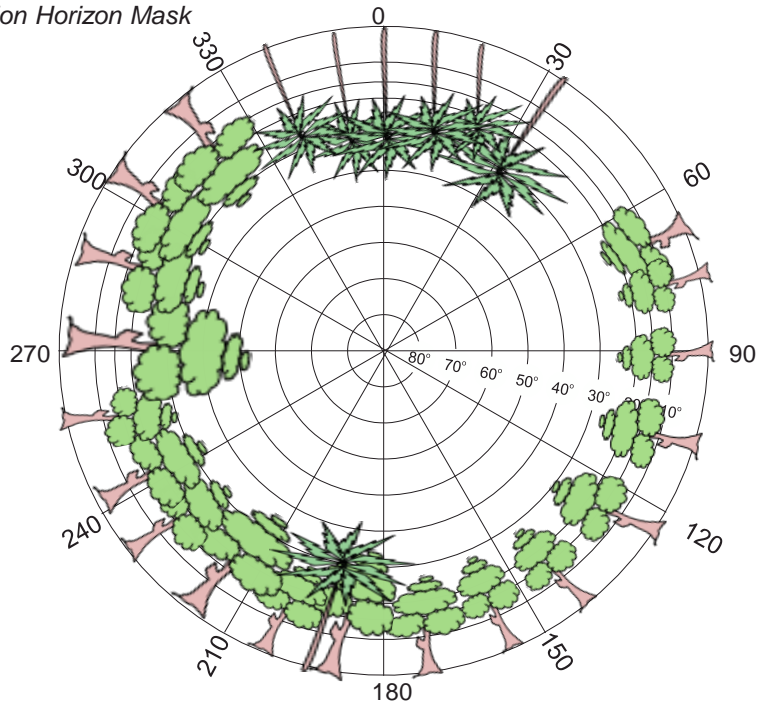


**SITE INFORMATION**

Station Number

P	S	M	5	7	5	7
---	---	---	---	---	---	---

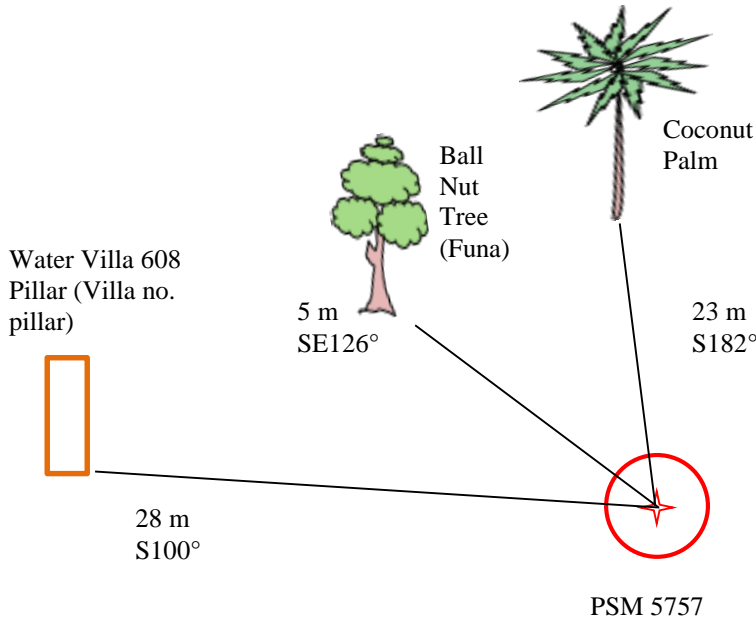
Station Horizon Mask



Height above Marker that horizon was mapped from 1.5 m

Magnetic Declination -----  
 Declination applied to this figure?  
 Yes  No

Locality



Sketched by: Abdul Awwal A. Nizar

Scale: Not to scale

Date: 19/10/2019



# MALDIVES LAND AND SURVEY AUTHORITY

MINISTRY OF NATIONAL PLANNING AND INFRASTRUCTURE

Office (PABX): +(960) 3004300, Fax: +(960) 3004254

Ameenee Magu, Maafannu, Male', 20392, Maldives.

Email: [survey@planning.gov.mv](mailto:survey@planning.gov.mv)

Web: [www.surveyofmaldives.gov.mv](http://www.surveyofmaldives.gov.mv)



<b>CONTROL POINT DETAILS</b>	<b>Station Number</b> PSM 5758
<b>Coordinate Information</b>	
<b>Geodetic</b>	<b>Grid</b>
<b>WGS 84</b>	<b>UTM Zone 43</b>
Lat: E73° 26' 26.88"	E: 326490.9446
Long: N0° 41' 22.24"	N: 76240.2824
Ellp Height: -86.095	Orth Height: + 1.163
<b>Island Name:</b> Ga.Dhigurah	<b>Date:</b> 16/10/2019

### Monument description & method of survey:

- Concrete casted in 300mm diameter PVC pipe, length measuring 1100mm buried below ground, 1m s/s rod driven into the concrete as the center mark. Monument labeled with s/s plate stating point ID.
- 40mm above ground
- GNSS static survey post processing.
- Vertical height relative to PSM 5756

### General site condition & access:

- Located towards mid-west of the island
- Easy access.

Owner: Bonavista (Maldives) Private Limited



Height 1.5m

DOWN TOWARD PSM



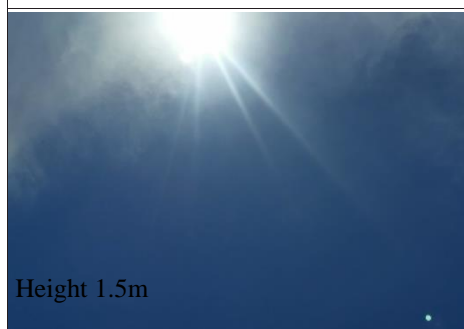
Height 1.5m  
Distance 5m

NORTH VIEW



Height 1.5m  
Distance 5m

EAST VIEW



Height 1.5m

FROM PSM UPTOWARD SKY



Height 1.5m  
Distance 5m

SOUTH VIEW



Height 1.5m  
Distance 5m

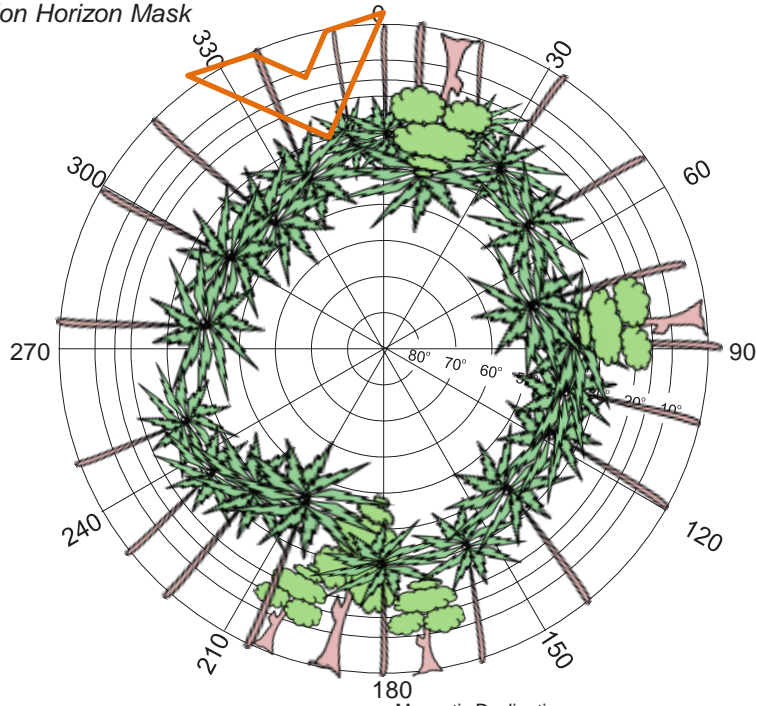
WEST VIEW

**SITE INFORMATION**

Station Number

P	S	M	5	7	5	8
---	---	---	---	---	---	---

Station Horizon Mask

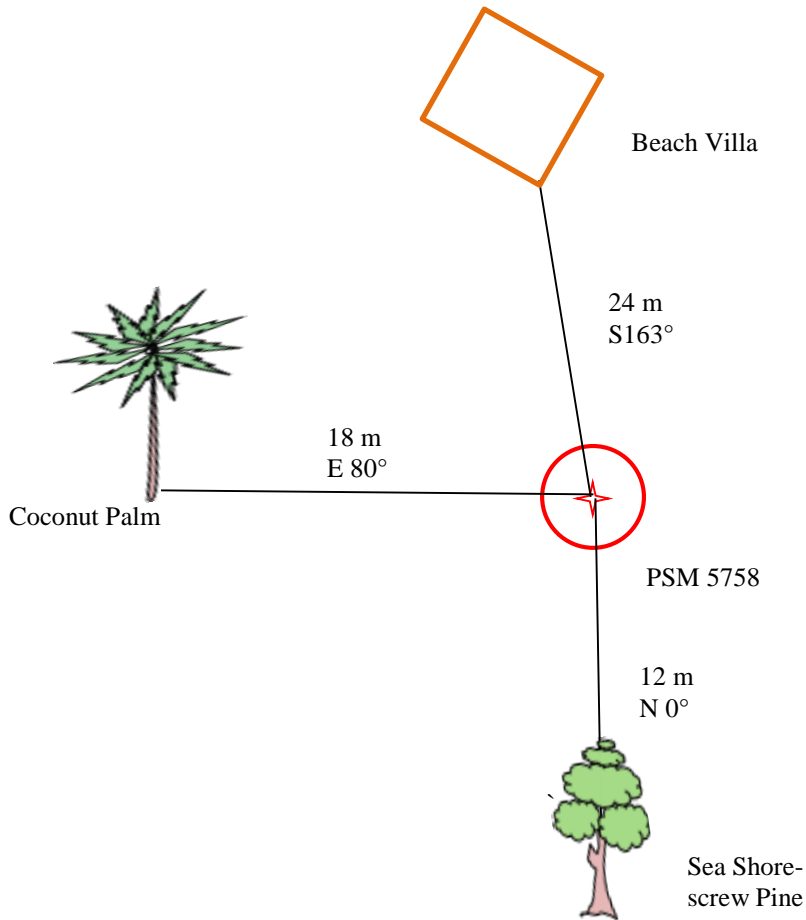


Height above Marker that horizon was mapped from 1.5 m

Magnetic Declination -----  
 Declination applied to this figure?  
 Yes  No



Locality



Sketched by: Abdul Awwal A. Nizar

Scale: Not to scale

Date: 19/10/2019